

CROBOT TECHNOLOGIES PRIVATE LIMITED

# UBOT

YOUR  
TELEPRESENCE  
COMPANION

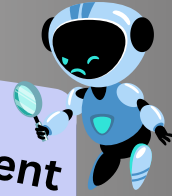


CROBOT TECHNOLOGIES

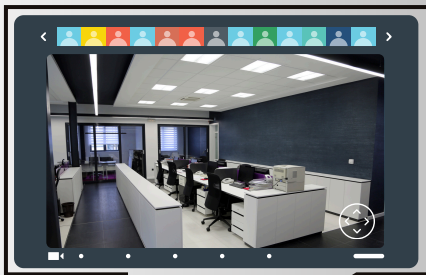


# UBOT

Virtual User - Real Environment



Step into a new era where our UBOT becomes your personal bridge, revolutionizing the way we communicate. Join us in shattering the barriers of distance, unlocking boundless connectivity as we transit into the realm of mixed reality.



Establish interaction between the client and UBOT through a customized web-based GUI

Instant connect with the UBOT in real-time



***"Make your presence felt anytime anywhere"***

UBOT empowers users to seamlessly monitor and engage with clients remotely



**TECHNICAL SPECIFICATIONS****CAMERA**

(5MP RGB ) WITH MIC  
135°(D) 95°(H) 70°(V) FOV  
PAN ANGLE 15 DEGREE  
2592 × 1944 15FPS MJPG,YVY2

**TOUCH DISPLAY**

1280 × 800 PIXELS  
STANDARD HDMI  
UBUNTU  
10.1 INCH SIZE  
10-POINT CAPACITIVE TOUCH

**SPEAKER WITH MIC**

1x Set of two 8Ω 5W  
Speaker module

**RPLiDAR**

360 DEGREE 2D LASER  
SCANNER  
RANGE : 0.2M - 12M  
TEMP: 0°C-40°C  
256000bps & 16K sampling  
frequency

**DEPTH CAMERA**

Intel RealSense Depth Camera  
with IMU  
Max Range : Approx. 10m  
Active IR Stereo  
Depth Output Resolution: up  
to 1280 x 720  
Frame Rate: Up to 90 fps

**IMU**

BOSCH 3 X 3 AXIS

**PAYLOAD TRAY**

(UPTO 20KG)

**BATTERY**

24 VOLT  
RUN TIME : 6-8 HOURS  
Charging time : 4 hours to 85  
percent

**BUMPER SENSOR**

Safety measure

**EMERGENCY SWITCH**

Safety measure

**DIMENSIONS : 1.8 FEET DIAMETER x 4.5 FEET HEIGHT**

**MOTORS**

24V ORINETAL BRUSHLESS  
DC MOTORS  
3000 RPM (MAX)  
ENCODER : 30 PULSES PER  
REVOLUTION

**WEB INTERFACE**

UPTO 25 PERSONS CAN  
CONNECT WITH ROBOT

**WEB DASHBOARD**

DEDICATED USER LOGIN  
WITH MULTIPLE ROBOT  
CONNECTIVITY

• IMAGE DISPLAYED HERE IS FOR REPRESENTATION PURPOSE ONLY AND MAY VARY BASED ON USER APPLICATION





## PROCESSOR, MEMORY AND STORAGE

NVIDIA® JETSON ORIN NANO  
DEVELOPER KIT - SOM

AI BOARD BUILT WITH JETSON ORIN NANO  
8GB 128-BIT LPDDR5 68 GB/S

RICH SET OF IOS INCLUDING USB 3.2 GEN  
2 PORTS, 2X M.2 KEY M FOR SSD, PRE-  
INSTALLED WI-FI MODULE, AND MORE

DELIVERS UP TO 40TOPS AI PERFORMANCE

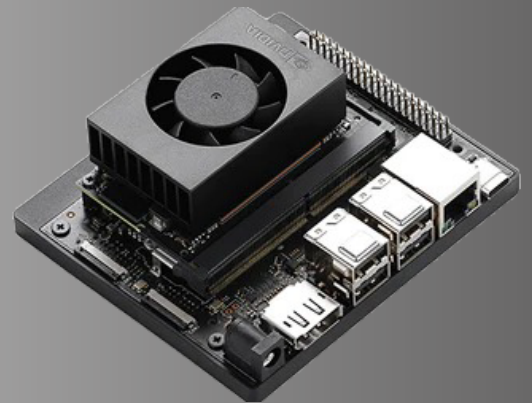
TWO MIPI CSI CONNECTORS THAT SUPPORT  
CAMERA MODULES WITH UP TO 4-LANES,  
ALLOWING FOR HIGHER RESOLUTION AND  
FRAME RATES.

GPU: 1024-CORE NVIDIA AMPERE  
ARCHITECTURE GPU WITH 32 TENSOR  
CORES

CPU: 6-CORE ARM® CORTEX®-A78AE V8.2  
64-BIT CPU 1.5MB L2 + 4MB L3

STORAGE: 128 SD CARD PRE INSTALLED WITH  
ROS 1

SSD NVME 256GB VIA M.2 KEY



## APPLICATIONS



FACTORY, INDUSTRIAL AND WAREHOUSE  
MONITORING



HEALTHCARE ASSISTANCE



TOURISM, RETAIL AND CUSTOMER  
SERVICE, EVENT PARTICIPATION



SECURITY AND SURVEILLANCE



CONSTRUCTION ELDERLY ASSISTANCE



EDUCATION AND REMOTE LEARNING







LIDAR AND VISION  
BASED OBSTACLE  
AVOIDANCE

SUBSCRIPTION MODEL BASED  
ON USAGE FOR THE SOFTWARE  
PACKAGE

LOCAL AND REMOTE  
OPERATION OF THE  
ROBOT

**FEATURES OF  
UBOT**



CUSTOM BUILT UI FOR REMOTE  
OPERATION OF UBOT

FRONT AND REAR COLLISION  
DETECTION USING BUMPER  
MODULE FOR IMPROVED  
SAFETY MEASURES

EMERGENCY STOP SWITCH TO  
PREVENT UNFORESEEN ACCIDENTS



• END PRODUCT APPEARANCE MAY BE DIFFERENT FROM THE IMAGES